

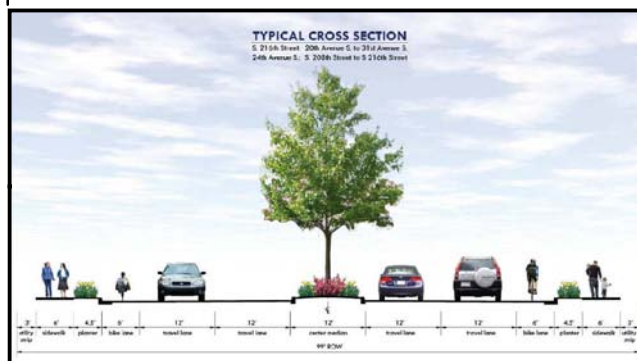


# Transportation Gateway Link

## Legend

- Transportation Gateway Link (S. 216th St. & 24th Ave. S)
- Future 24th/28th Avenue Connector
- Future 16th Avenue Extension
- Future South 218th Street Extension
- Proposed State Route 509
- Des Moines Creek Trail
- Proposed Barnes Creek Trail Extension

## Proposed Gateway Link Cross-Section

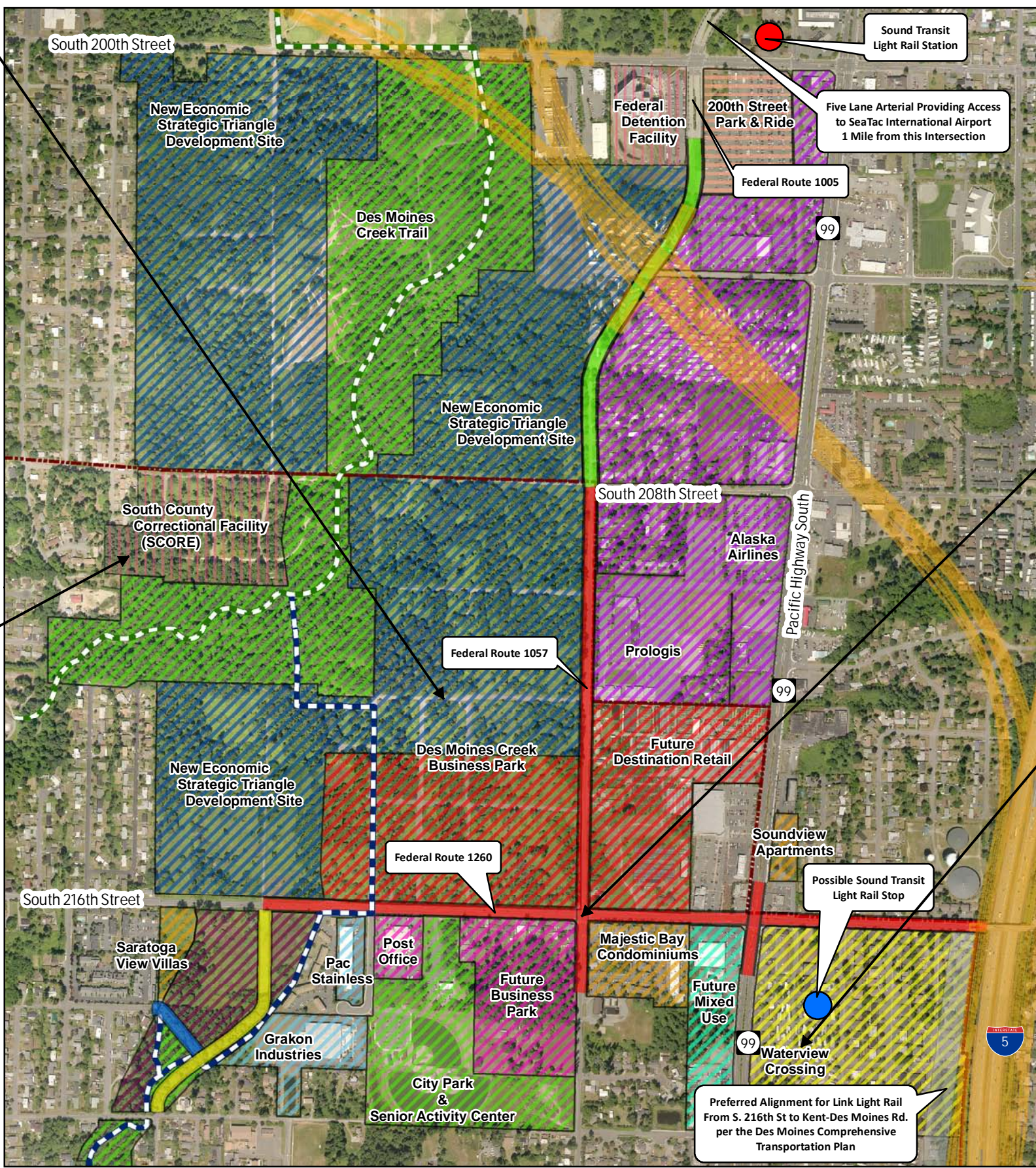


## Waterview Crossing



## Waterview Crossing Description:

11 Acre Master Plan Site Consisting of  
 \* 150,000 Square Feet of Office and Retail  
 \* 1,600 Residential Units  
 350 - 400 Family Wage Jobs



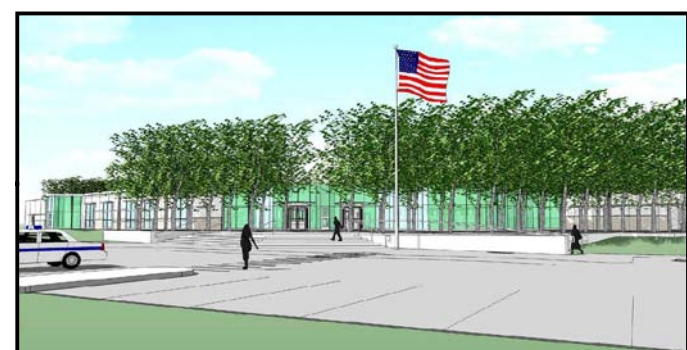
## Des Moines Creek Business Park



## Des Moines Creek Business Park Description:

89 Acre Business Park Consisting of  
 \* 865,000 Square Feet of Logistics or Flex-Office  
 \* 235,000 Square Feet of Retail  
 1,200 - 2,100 Family Wage Jobs

## SCORE



## SCORE Description:

838 Bed Regional Misdemeanant Correctional Facility  
 110 - 120 Family Wage Jobs

**Proposed and Existing Land Use**

Industrial/Aviation Related	Commerical	Governmental	Residential
Aviation Business (84 Acres)	Destination Retail (57 Acres)	City of Des Moines (13 Acres)	Midrise Residential (11 Acres)
Airport Logistic/Office (200 Acres)	Business Park (17 Acres)	Regional Park (110 Acres)	Highrise Residential (38 Acres)
Light Industrial (9 Acres)	Mixed Use (9 Acres)	Detention Facilities (22 Acres)	
		Mass Transit Facilities (10 Acres)	

Map Generated: April 21, 2009 Product of City of Des Moines Development Services